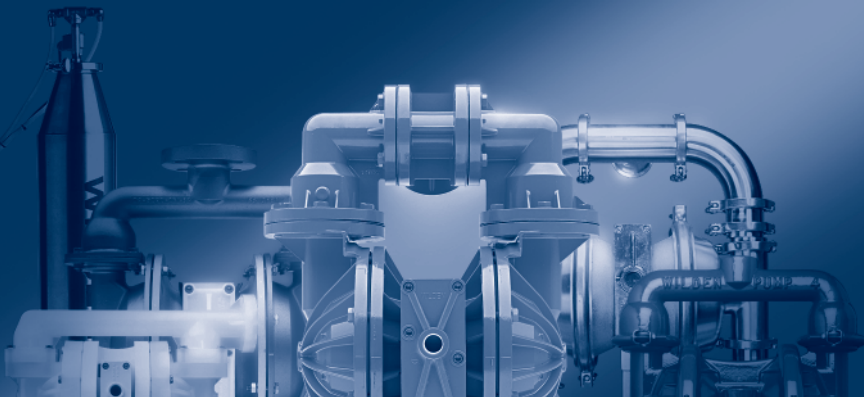


WILDEN[®]
A DOVER COMPANY

PUMP USER'S GUIDE



**Torque/
Shaft Specs**

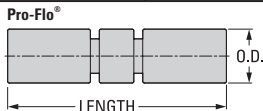
5

Accu-Flo™

A.025 PLASTIC

TORQUE	Description of Part	Torque Value
	Air Valve, Turbo-Flo™ Version	2.3 N•m (20 in-lbs)
	Air Valve, Pro-Flo® Version	3.1 N•m (27 in-lbs)
	Outer Piston, Rubber & TPE fitted	5.6 N•m (50 in-lbs)
	Top & Bottom Retainer, Polypropylene	5.6 N•m (50 in-lbs)
	Top & Bottom Retainer, PVDF	6.2 N•m (55 in-lbs)
	Top & Bottom Retainer, Carbon Filled Acetal	6.2 N•m (55 in-lbs)
	Large Clamp Bands	2.3 N•m (20 in-lbs)

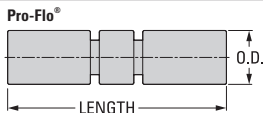
SHAFTS	Diaphragm Material	Part Number	Dimensions
	Turbo-Flo™ Version, All Diaphragms	00-3800-03	2.013" L x 0.372" O.D.
Pro-Flo® Version, All Diaphragms	00-3800-99-700	2.015" L x 0.496" O.D.	



A.025 METAL

TORQUE	Description of Part	Torque Value
	Air Valve, Turbo-Flo™ Version	2.3 N•m (20 in-lbs)
	Air Valve, Pro-Flo® Version	3.1 N•m (27 in-lbs)
	Outer Piston	5.6 N•m (50 in-lbs)
	Vertical Bolts	5.6 N•m (50 in-lbs)
Large Clamp Bands	2.3 N•m (20 in-lbs)	

SHAFTS	Diaphragm Material	Part Number	Dimensions
	Turbo-Flo™ Version, All Diaphragms	00-3800-03	2.013" L x 0.372" O.D.
Pro-Flo® Version, All Diaphragms	00-3800-99-700	2.015" L x 0.496" O.D.	

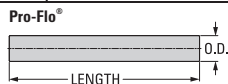


Accu-Flo™ cont'd

A1 PLASTIC

TORQUE	Description of Part	Torque Value
	Air Valve, Turbo-Flo™ Version	2.3 N·m (20 in-lbs)
	Air Valve, Pro-Flo® Version	3.1 N·m (27 in-lbs)
	Outer Piston, Rubber, All Diaphragms	14.1 N·m (125 in-lbs)
	Vertical Bolts, Rubber-fitted, Polypropylene	9.0 N·m (80 in-lbs)
	Vertical Bolts, Rubber-fitted, PVDF	5.6 N·m (50 in-lbs)
	Vertical Bolts, PTFE-fitted Polypropylene	9.0 N·m (80 in-lbs)
	Vertical Bolts, PTFE-fitted PVDF & PFA	2.8 N·m (25 in-lbs)
	Small Clamp Bands	1.7 N·m (15 in-lbs)
	Large Clamp Bands, Rubber & TPE fitted	7.3 N·m (65 in-lbs)
Large Clamp Bands, PTFE fitted	9.6 N·m (85 in-lbs)	

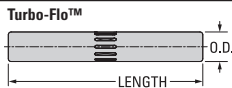
SHAFTS	Diaphragm Material	Part Number	Dimensions
	Turbo-Flo™ Version, All Diaphragms	01-3800-03-07	3.350" L x 0.622" O.D.
Pro-Flo® Version, All Diaphragms	01-3810-03	3.350" L x 0.622" O.D.	



A1 METAL

TORQUE	Description of Part	Torque Value
	Air Valve, Turbo-Flo™ Version	2.3 N·m (20 in-lbs)
	Air Valve, Pro-Flo® Version	3.1 N·m (27 in-lbs)
	Outer Piston, Rubber, TPE & PTFE w/ Neoprene fitted	14.1 N·m (125 in-lbs)
	Outer Piston, PTFE w/EPDM fitted	24.4 N·m (18 ft-lbs)
	Vertical Bolts	14.1 N·m (125 in-lbs)
	Small Clamp Bands	1.7 N·m (15 in-lbs)
	Large Clamp Bands, Rubber & TPE fitted	9.0 N·m (80 in-lbs)
Large Clamp Bands, PTFE fitted	13.6 N·m (120 in-lbs)	

SHAFTS	Diaphragm Material	Part Number	Dimensions
	Turbo-Flo™ Version, All Diaphragms	01-3800-03-07	3.350" L x 0.622" O.D.
Pro-Flo® Version, All Diaphragms	01-3810-03	3.350" L x 0.622" O.D.	

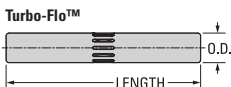


Accu-Flo™ cont'd

A2 PLASTIC

TORQUE	Description of Part	Torque Value
	Air Valve, Turbo-Flo™ Version	2.3 N-m (20 in-lbs)
	Air Valve, Pro-Flo® Version	3.1 N-m (27 in-lbs)
	Outer Piston, All Diaphragms	27.1 N-m (20 ft-lbs)
	Top & Bottom Retainers	14.1 N-m (125 in-lbs)
	Large Clamp Band, Rubber & TPE fitted	10.7 N-m (95 in-lbs)
Large Clamp Band, PTFE fitted	14.1 N-m (125 in-lbs)	

SHAFTS	Diaphragm Material	Part Number	Dimensions
	Turbo-Flo™ Version, All Diaphragms	02-3820-03-07	4.687" L x 0.750" O.D.
	Pro-Flo® Version, All Diaphragms	02-3810-03	5.000" L x 0.750" O.D.



A2 METAL

TORQUE	Description of Part	Torque Value
	Air Valve, Turbo-Flo™ Version	2.3 N-m (20 in-lbs)
	Air Valve, Pro-Flo® Version	3.1 N-m (27 in-lbs)
	Outer Piston, All Diaphragms	40.7 N-m (30 ft-lbs)
	Vertical Bolts	31.2 N-m (23 ft-lbs)
	*Vertical Bolts	13.0 N-m (115 in-lbs)
*Liquid Chamber to Air Chamber	13.0 N-m (115 in-lbs)	

SHAFTS	Diaphragm Material	Part Number	Dimensions
	Turbo-Flo™ Version, All Diaphragms	02-3820-03-07	4.687" L x 0.750" O.D.
	Pro-Flo® Version, All Diaphragms	02-3810-03	5.000" L x 0.750" O.D.

*Pro-Flo® Hybrid Bolted Pump only.



Accu-Flo™ cont'd

A4 PLASTIC

TORQUE	Description of Part	Torque Value
	Air Valve	3.4 N·m (30 in-lbs)
	Outer Piston, All Diaphragms	47.5 N·m (35 ft-lbs)
	Small Clamp Band	9.6 N·m (85 in-lbs)
	Large Clamp Band, Rubber & TPE fitted	18.6 N·m (165 in-lbs)
Large Clamp Band, PTFE fitted	18.6 N·m (165 in-lbs)	

SHAFTS	Diaphragm Material	Part Number	Dimensions
	Rubber/TPE	08-3840-09	5.875" L x 0.872" O.D.
	PTFE	04-3820-03-700	4.940" L x 0.872" O.D.
	Ultra-Flex™	04-3835-03	5.375" L x 0.872" O.D.



A4 METAL

TORQUE	Description of Part	Torque Value
	Air Valve	3.4 N·m (30 in-lbs)
	Outer Piston, Rubber & TPE fitted	34.2 N·m (40 ft-lbs)
	Outer Piston, PTFE fitted	34.2 N·m (40 ft-lbs)
	Outer Piston, Ultra-Flex™ fitted	47.5 N·m (35 ft-lbs)
	Small Clamp Band	3.4 N·m (30 in-lbs)
	Large Clamp Band, Rubber & TPE fitted	10.7 N·m (95 in-lbs)
	Large Clamp Band, PTFE fitted	13.6 N·m (120 in-lbs)
Air Chamber to Center Block	13.0 N·m (115 in-lbs)	

SHAFTS	Diaphragm Material	Part Number	Dimensions
	Rubber/TPE	08-3840-09	5.875" L x 0.872" O.D.
	PTFE	04-3820-03-700	4.940" L x 0.872" O.D.
	Ultra-Flex™	04-3835-03	5.375" L x 0.872" O.D.



Accu-Flo™ cont'd

A8 PLASTIC

TORQUE	Description of Part	Torque Value
	Air Valve	6.8 N-m (60 in-lbs)
	Outer Piston, Rubber & TPE fitted	81.3 N-m (60 ft-lbs)
	Outer Piston, PTFE fitted	81.3 N-m (60 ft-lbs)
	Outer Piston, Ultra-Flex™ fitted	47.5 N-m (35 ft-lbs)
	Small Clamp Band	9.6 N-m (85 in-lbs)
	Large Clamp Band, Rubber & TPE fitted	18.6 N-m (165 in-lbs)
	Large Clamp Band, PTFE fitted	18.6 N-m (165 in-lbs)
Air Chamber to Center Block	27.1 N-m (20 ft-lbs)	

SHAFTS	Diaphragm Material	Part Number	Dimensions
	Rubber/TPE	08-3805-09	10.000" L x 0.872" O.D.
	PTFE	08-3840-09	5.875" L x 0.872" O.D.
	Ultra-Flex™	08-3841-03	5.875" L x 0.872" O.D.



A8 METAL

TORQUE	Description of Part	Torque Value
	Air Valve	6.8 N-m (60 in-lbs)
	Outer Piston, Rubber & TPE fitted	108.5 N-m (80 ft-lbs)
	Outer Piston, PTFE fitted	108.5 N-m (80 ft-lbs)
	Outer Piston, Ultra-Flex	74.6 N-m (55 ft-lbs)
	Outer Piston, Rubber & TPE fitted w/ stainless steel inner piston	115.2 N-m (85 ft-lbs)
	Small Clamp Band	3.4 N-m (30 in-lbs)
	Large Clamp Band, Rubber & TPE fitted	10.7 N-m (95 in-lbs)
Large Clamp Band, PTFE fitted	13.6 N-m (120 in-lbs)	
Air Chamber to Center Block	27.1 N-m (20 ft-lbs)	

SHAFTS	Diaphragm Material	Part Number	Dimensions
	Rubber/TPE	08-3805-09	10.000" L x 0.872" O.D.
	PTFE	08-3840-09	5.875" L x 0.872" O.D.
	Ultra-Flex™	08-3841-03	5.875" L x 0.872" O.D.

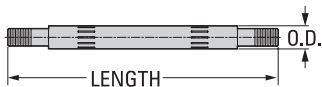


Accu-Flo™ cont'd

A15 METAL

TORQUE	Description of Part	Torque Value
	Air Valve	9.0 N·m (80 in-lbs)
	Outer Piston, Rubber & TPE fitted	135.6 N·m (100 ft-lbs)
	Outer Piston, PTFE fitted	135.6 N·m (100 ft-lbs)
	Outer Piston, Ultra-Flex™ fitted	135.6 N·m (100 ft-lbs)
	Inner Piston Ring	18.9 N·m (14 ft-lbs)
	Small Clamp Band	15.5 N·m (137 in-lbs)
	Large Clamp Band, Rubber & TPE fitted	61.0 N·m (45 ft-lbs)
	Large Clamp Band, PTFE fitted	61.0 N·m (45 ft-lbs)
	Air Chamber to Center Block	27.1 N·m (20 ft-lbs)

SHAFTS	Diaphragm Material	Part Number	Dimensions
	All	15-3800-09-07	11.625" L x 0.995" O.D.



HIGH PRESSURE

H400S METAL

SHAFTS	Diaphragm Material	Part Number	Dimensions
	TPE & Aluminum Wetted Components	04-3845-08	8.400" L x 0.995" O.D.
TPE & Stainless Steel Wetted Components	04-3846-08	8.210" L x 0.995" O.D.	

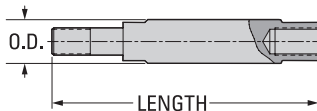
TORQUE	Description of Part	Torque Value
	Air Valve	13.6 N-m (120 in-lbs)
	Outer Piston, TPE	105.8 N-m (78 ft-lbs)
	Air Chamber to Center Block	27.1 N-m (20 ft-lbs)



H800 METAL

SHAFTS	Diaphragm Material	Part Number	Dimensions
	TPE	08-3800-03-60	6.099" L x 1.000" O.D.

TORQUE	Description of Part	Torque Value
	Air Valve	9.5 N-m (84 in-lbs)
	Outer Piston, TPE fitted	139.6 N-m (103 ft-lbs)
	Inner Piston	58.3 N-m (43 ft-lbs)
	Center Section Cover Bolts	88.1 N-m (65 ft-lbs)
	Top & Bottom Manifolds	17.6 N-m (13 ft-lbs)
	Liquid Chamber	58.3 N-m (43 ft-lbs)

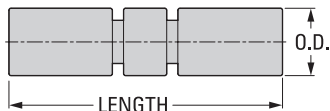


Pro-Flo®

P.025 PLASTIC

TORQUE	Description of Part	Torque Value
	Air Valve	2.3 N·m (20 in-lbs)
	Outer Piston, Rubber & TPE fitted	5.6 N·m (50 in-lbs)
	Top & Bottom Retainer, Polypropylene	5.6 N·m (50 in-lbs)
	Top & Bottom Retainer, PVDF	6.2 N·m (55 in-lbs)
	Top & Bottom Retainer, Carbon Filled Acetal	6.2 N·m (55 in-lbs)
	Large Clamp Bands	2.3 N·m (20 in-lbs)

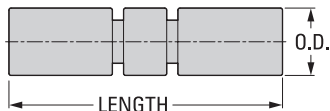
SHAFTS	Diaphragm Material	Part Number	Dimensions
	All	00-3800-99-700	2.015" L x 0.496" O.D.



P.025 METAL

TORQUE	Description of Part	Torque Value
	Air Valve	2.3 N·m (20 in-lbs)
	Outer Piston	5.6 N·m (50 in-lbs)
	Vertical Bolts	5.6 N·m (50 in-lbs)
	Large Clamp Bands	2.3 N·m (20 in-lbs)

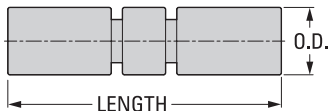
SHAFTS	Diaphragm Material	Part Number	Dimensions
	All	00-3800-99-700	2.015" L x 0.496" O.D.



PUMP USER'S GUIDE II
Pro-Flo® Cont'd
P25 PLASTIC

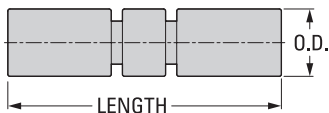
TORQUE	Description of Part	Torque Value
	Air Valve	2.3 N-m (20 in-lbs)
	Outer Piston, Rubber & TPE fitted	5.6 N-m (50 in-lbs)
	Top & Bottom Manifolds	6.2 N-m (55 in-lbs)
	Liquid Chamber to Center Section	6.2 N-m (55 in-lbs)

SHAFTS	Diaphragm Material	Part Number	Dimensions
	All	00-3800-99-700	2.015" L x 0.496" O.D.


P38 PLASTIC

TORQUE	Description of Part	Torque Value
	Air Valve	2.3 N-m (20 in-lbs)
	Outer Piston, Rubber & TPE fitted	5.6 N-m (50 in-lbs)
	Top & Bottom Manifolds	6.2 N-m (55 in-lbs)
	Liquid Chamber to Center Section	6.2 N-m (55 in-lbs)

SHAFTS	Diaphragm Material	Part Number	Dimensions
	All	00-3800-99-700	2.015" L x 0.496" O.D.

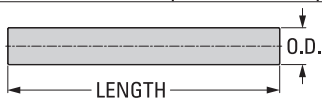


Pro-Flo® Cont'd

P1 PLASTIC

TORQUE	Description of Part	Torque Value
	Air Valve	3.1 N·m (27 in-lbs)
	Outer Piston, Rubber, All Diaphragms	14.1 N·m (125 in-lbs)
	Vertical Bolts, Rubber-fitted, Polypropylene	9.0 N·m (80 in-lbs)
	Vertical Bolts, Rubber-fitted, PVDF	5.6 N·m (50 in-lbs)
	Vertical Bolts, PTFE-fitted Polypropylene	9.0 N·m (80 in-lbs)
	Vertical Bolts, PTFE-fitted PVDF & PFA	2.8 N·m (25 in-lbs)
	Small Clamp Bands	1.7 N·m (15 in-lbs)
	Large Clamp Bands, Rubber & TPE fitted	7.3 N·m (65 in-lbs)
Large Clamp Bands, PTFE fitted	9.6 N·m (85 in-lbs)	

SHAFTS	Diaphragm Material	Part Number	Dimensions
	All	01-3810-03	3.350" L x 0.622" O.D.



P1 METAL

TORQUE	Description of Part	Torque Value
	Air Valve	3.1 N·m (27 in-lbs)
	Outer Piston, Rubber, TPE & PTFE w/ Neoprene fitted	14.1 N·m (125 in-lbs)
	Outer Piston, PTFE w/EPDM fitted	20.3 N·m (15 ft-lbs)
	Vertical Bolts	14.1 N·m (125 in-lbs)
	Small Clamp Bands	1.7 N·m (15 in-lbs)
	Large Clamp Bands, Rubber & TPE fitted	9.0 N·m (80 in-lbs)
Large Clamp Bands, PTFE fitted	13.6 N·m (120 in-lbs)	

SHAFTS	Diaphragm Material	Part Number	Dimensions
	All	01-3810-03	3.350" L x 0.622" O.D.



Pro-Flo® Cont'd

P100 PLASTIC

TORQUE	Description of Part	Torque Value
	Air Valve	3.1 N·m (27 in-lbs)
	Outer Piston, All Diaphragms	10.2 N·m (90 in-lbs)
	Top & Bottom Manifolds	5.6 N·m (50 in-lbs)
	Liquid Chamber to Air Chamber	5.6 N·m (50 in-lbs)

SHAFTS	Diaphragm Material	Part Number	Dimensions
	All	01-3810-03	3.350" L x 0.622" O.D.



Pro-Flo® Cont'd

P2 PLASTIC

TORQUE	Description of Part	Torque Value
	Air Valve	3.1 N·m (27 in-lbs)
	Outer Piston, All Diaphragms	27.1 N·m (20 ft-lbs)
	Top & Bottom Retainers	14.1 N·m (125 in-lbs)
	Large Clamp Band, Rubber & TPE fitted	10.7 N·m (95 in-lbs)
Large Clamp Band, PTFE fitted	14.1 N·m (125 in-lbs)	

SHAFTS	Diaphragm Material	Part Number	Dimensions
	Rubber/TPE	02-3810-03	5.000" L x 0.750" O.D.
	PTFE	02-3840-03	4.687" L x 0.750" O.D.



P2 METAL

TORQUE	Description of Part	Torque Value
	Air Valve	3.1 N·m (27 in-lbs)
	Outer Piston, All Diaphragms	40.7 N·m (30 in-lbs)
	Vertical Bolts	31.2 N·m (23 ft-lbs)
	*Vertical Bolts	13.0 N·m (115 in-lbs)
*Liquid Chamber to Air Chamber	13.0 N·m (115 in-lbs)	

SHAFTS	Diaphragm Material	Part Number	Dimensions
	Rubber/TPE	02-3810-03	5.000" L x 0.750" O.D.
	PTFE	02-3840-03	4.687" L x 0.750" O.D.

*Hybrid Bolted Pump only.



PUMP USER'S GUIDE II
Pro-Flo® Cont'd
P200 PLASTIC

TORQUE	Description of Part	Torque Value
	Air Valve	3.1 N-m (27 in-lbs)
	Outer Piston, All Diaphragms	27.1 N-m (20 in-lbs)
	Top & Bottom Manifolds, Polypropylene & PVDF	5.6 N-m (50 in-lbs)
	Top & Bottom Manifolds, PFA	3.4 N-m (30 in-lbs)
	Liquid Chamber, Polypropylene & PVDF	8.5 N-m (75 in-lbs)
Liquid Chamber, PFA	5.6 N-m (50 in-lbs)	

SHAFTS	Diaphragm Material	Part Number	Dimensions
	Rubber/TPE	02-3810-03	5.000" L x 0.750" O.D.
PTFE	02-3840-03	4.687" L x 0.750" O.D.	


P200 METAL

TORQUE	Description of Part	Torque Value
	Air Valve	3.1 N-m (27 in-lbs)
	Outer Piston, All Diaphragms	40.7 N-m (30 in-lbs)
	Top & Bottom Manifolds	8.5 N-m (75 in-lbs)
Liquid Chamber	8.5 N-m (75 in-lbs)	

SHAFTS	Diaphragm Material	Part Number	Dimensions
	Rubber/TPE	02-3810-03	5.000" L x 0.750" O.D.
PTFE	02-3840-03	4.687" L x 0.750" O.D.	



Pro-Flo® Cont'd

P4 PLASTIC

	Description of Part	Torque Value
TORQUE	Air Valve	5.1 N·m (45 in-lbs)
	Outer Piston, All Diaphragms	40.7 N·m (30 ft-lbs)
	Small Clamp Band	9.6 N·m (85 in-lbs)
	Large Clamp Band Rubber, TPE & PTFE fitted	18.6 N·m (165 in-lbs)
	Air Chamber to Center Block	46.6 N·m (35 ft-lbs)

	Diaphragm Material	Part Number	Dimensions
SHAFTS	Rubber/TPE	04-3800-03-700	5.531" L x 0.872" O.D.
	PTFE	04-3820-03-700	4.940" L x 0.872" O.D.
	Ultra-Flex™	04-3830-03-700	5.170" L x 0.872" O.D.



P4 METAL

	Description of Part	Torque Value
TORQUE	Air Valve	5.1 N·m (45 in-lbs)
	Outer Piston, Rubber, TPE & PTFE	54.2 N·m (40 ft-lbs)
	Outer Piston, Rubber, TPE & PTFE w/Stainless Steel Inner Piston	54.2 N·m (40 ft-lbs)
	Outer Piston, Ultra-Flex	54.2 N·m (40 ft-lbs)
	Small Clamp Band	3.4 N·m (30 in-lbs)
	Large Clamp Band Rubber & TPE fitted	10.7 N·m (95 in-lbs)
	Large Clamp Band PTFE fitted	13.6 N·m (120 in-lbs)
Air Chamber to Center Block	46.6 N·m (38 ft-lbs)	

	Diaphragm Material	Part Number	Dimensions
SHAFTS	Rubber/TPE	04-3800-03-700	5.531" L x 0.872" O.D.
	PTFE	04-3820-03-700	4.940" L x 0.872" O.D.
	Ultra-Flex™	04-3830-03-700	5.170" L x 0.872" O.D.



PUMP USER'S GUIDE II
Pro-Flo® Cont'd
P400 PLASTIC

TORQUE	Description of Part	Torque Value
	Air Valve	5.1 N·m (45 in-lbs)
	Outer Piston, All Diaphragms	47.5 N·m (35 ft-lbs)
	Top & Bottom Manifolds	9.6 N·m (85 in-lbs)
	Liquid Chamber	9.6 N·m (85 in-lbs)
	Air Chamber to Center Block	47.5 N·m (35 ft-lbs)

SHAFTS	Diaphragm Material	Part Number	Dimensions
	Rubber/TPE	04-3811-03	6.439" L x 0.872" O.D.
	PTFE	04-3842-03	5.848" L x 0.872" O.D.


P400 METAL

TORQUE	Description of Part	Torque Value
	Air Valve	5.1 N·m (45 in-lbs)
	Outer Piston, Rubber, TPE & PTFE fitted	54.2 N·m (40 ft-lbs)
	Outer Piston, Ultra-Flex™ fitted	74.6 N·m (55 ft-lbs)
	Liquid Chamber, Stainless Steel Only	17.6 N·m (13 ft-lbs)
	Air Chamber to Center Block	47.5 N·m (35 ft-lbs)

SHAFTS	Diaphragm Material	Part Number	Dimensions
	Rubber/TPE	04-3811-03	6.439" L x 0.872" O.D.
	PTFE	04-3842-03	5.848" L x 0.872" O.D.



Pro-Flo® Cont'd

P8 PLASTIC

TORQUE	Description of Part	Torque Value
	Air Valve	5.1 N·m (45 in-lbs)
	Outer Piston, Rubber & TPE fitted	81.3 N·m (60 ft-lbs)
	Outer Piston, PTFE fitted	81.3 N·m (60 ft-lbs)
	Outer Piston, Ultra-Flex™ fitted	54.2 N·m (40 ft-lbs)
	Small Clamp Band	9.6 N·m (85 in-lbs)
	Large Clamp Band, Rubber & TPE fitted	18.6 N·m (165 in-lbs)
	Large Clamp Band, PTFE fitted	18.6 N·m (165 in-lbs)
	Air Chamber to Center Block	47.5 N·m (35 ft-lbs)

SHAFTS	Diaphragm Material	Part Number	Dimensions
	Rubber/TPE	08-3810-09	9.860" L x 0.872" O.D.
	PTFE	08-3840-09	5.875" L x 0.872" O.D.
	Ultra-Flex™	08-3841-03	6.875" L x 0.872" O.D.



P8 METAL

TORQUE	Description of Part	Torque Value
	Air Valve	5.1 N·m (45 in-lbs)
	Outer Piston, Rubber & TPE fitted Excluding Stainless Steel Inner Piston	108.5 N·m (80 ft-lbs)
	Outer Piston, PTFE fitted	108.5 N·m (80 ft-lbs)
	Outer Piston, Ultra-Flex	74.6 N·m (55 ft-lbs)
	Outer Piston, Rubber & TPE fitted Including Stainless Steel Inner Piston	115.2 N·m (85 ft-lbs)
	Small Clamp Band	6.6 N·m (58 in-lbs)
	Large Clamp Band, Rubber & TPE fitted	47.5 N·m (35 ft-lbs)
	Large Clamp Band, PTFE fitted	47.5 N·m (35 ft-lbs)
Air Chamber to Center Block	47.5 N·m (38 ft-lbs)	

SHAFTS	Diaphragm Material	Part Number	Dimensions
	Rubber/TPE	08-3810-09	9.860" L x 0.872" O.D.
	PTFE	08-3840-09	5.875" L x 0.872" O.D.
	Ultra-Flex™	08-3841-03	6.875" L x 0.872" O.D.



PUMP USER'S GUIDE II
Pro-Flo® Cont'd
P800 PLASTIC

TORQUE	Description of Part	Torque Value
	Air Valve	5.1 N-m (45 in-lbs)
	Outer Piston, Rubber, TPE & PTFE fitted	81.3 N-m (60 ft-lbs)
	Outer Piston, Ultra-Flex™ fitted	47.5 N-m (35 ft-lbs)
	Top & Bottom Manifolds	44.7 N-m (33 ft-lbs)
	Liquid Chamber	44.7 N-m (33 ft-lbs)
	Air Chamber to Center Block	47.5 N-m (35 ft-lbs)

SHAFTS	Diaphragm Material	Part Number	Dimensions
	Rubber/TPE	08-3811-09	10.500" L x 0.872" O.D.
	PTFE	08-3842-03	6.750" L x 0.872" O.D.
	Ultra-Flex™	08-3843-03	7.500" L x 0.872" O.D.


P800 METAL

TORQUE	Description of Part	Torque Value
	Air Valve	5.1 N-m (45 in-lbs)
	Outer Piston, Rubber, TPE & PTFE fitted, w/Stainless Steel Inner Pistons	108.5 N-m (80 ft-lbs)
	Outer Piston, Rubber, TPE & PTFE fitted, Excluding Stainless Steel Inner Pistons	115.2 N-m (85 ft-lbs)
	Outer Piston, Ultra-Flex™ fitted	74.6 N-m (55 ft-lbs)
	Liquid Chamber, Aluminum Only	27.1 N-m (20 ft-lbs)
	Air Chamber to Center Block	47.5 N-m (35 ft-lbs)

SHAFTS	Diaphragm Material	Part Number	Dimensions
	Rubber/TPE	08-3811-09	10.500" L x 0.872" O.D.
	PTFE	08-3842-03	6.750" L x 0.872" O.D.
	Ultra-Flex™	08-3843-03	7.500" L x 0.872" O.D.



Pro-Flo® Cont'd

P15 METAL

TORQUE	Description of Part	Torque Value
	Air Valve	8.5 N·m (75 in-lbs)
	Outer Piston, All Diaphragms	135.6 N·m (100 ft-lbs)
	Inner Piston Ring	18.9 N·m (14 ft-lbs)
	Small Clamp Band	15.5 N·m 137 in-lbs)
	Large Clamp Band, Rubber & TPE fitted	61.0 N·m 45 ft-lbs)
	Large Clamp Band, PTFE fitted	61.0 N·m 45 ft-lbs)
	Air Chamber to Center Block	47.5 N·m (35 ft-lbs)

SHAFTS	Diaphragm Material	Part Number	Dimensions
	All	15-3805-09	11.625" L x .995" O.D.



Pro-Flo® Cont'd
P1500 PLASTIC

TORQUE	Description of Part	Torque Value
	Air Valve	8.5 N-m (75 in-lbs)
	Outer Piston, PTFE fitted	135.6 N-m (100 ft-lbs)
	Top & Bottom Manifolds	43.4 N-m (32 ft-lbs)
	Liquid Chamber	43.4 N-m (32 ft-lbs)
	Air Chamber to Center Block	47.5 N-m (35 ft-lbs)

SHAFTS	Diaphragm Material	Part Number	Dimensions
	PTFE	15-3842-03	15.900" L x 0.995" O.D.


P1500 METAL

TORQUE	Description of Part	Torque Value
	Air Valve	8.5 N-m (75 in-lbs)
	Inner Piston Ring	18.9 N-m (14 ft-lbs)
	Outer Piston, All Diaphragms	135.6 N-m (100 ft-lbs)
	Air Chamber to Center Block	47.5 N-m (35 ft-lbs)

SHAFTS	Diaphragm Material	Part Number	Dimensions
	All Diaphragms	15-3805-09	11.625" L x 0.995" O.D.



Pro-Flo V™

PV4 METAL

TORQUE	Description of Part	Torque Value
	Air Valve	13.6 N·m (120 in-lbs)
	Outer Piston, Rubber, TPE & PTFE	54.2 N·m (40 ft-lbs)
	Outer Piston, Ultra-Flex™	54.2 N·m (40 ft-lbs)
	Small Clamp Band	3.4 N·m (30 in-lbs)
	Large Clamp Band Rubber & TPE fitted	10.7 N·m (95 in-lbs)
	Large Clamp Band PTFE fitted	13.6 N·m (120 in-lbs)
	Air Chamber to Center Block	27.1 N·m (20 ft-lbs)

SHAFTS	Diaphragm Material	Part Number	Dimensions
	Rubber/TPE	04-3800-03-700	5.531" L x 0.872" O.D.
	PTFE	04-3820-03-700	4.940" L x 0.872" O.D.
	Ultra-Flex™	04-3830-03-700	5.170" L x 0.872" O.D.



Pro-Flo V™ Cont'd

PV400 PLASTIC

TORQUE	Description of Part	Torque Value
	Air Valve	13.6 N-m (120 in-lbs)
	Outer Piston, All Diaphragms	47.5 N-m (35 ft-lbs)
	Top & Bottom Manifolds	9.6 N-m (85 in-lbs)
	Liquid Chamber	9.6 N-m (85 in-lbs)
	Air Chamber to Center Block	27.1 N-m (20 ft-lbs)

SHAFTS	Diaphragm Material	Part Number	Dimensions
	Rubber/TPE	04-3811-03	6.439" L x 0.872" O.D.
	PTFE	04-3842-03	5.848" L x 0.872" O.D.



PV400 METAL

TORQUE	Description of Part	Torque Value
	Air Valve	13.6 N-m (120 in-lbs)
	Outer Piston, Rubber, TPE & PTFE fitted	54.2 N-m (40 ft-lbs)
	Outer Piston, Ultra-Flex™ fitted	54.2 N-m (40 ft-lbs)
	Liquid Chamber, Stainless Steel Only	17.6 N-m (13 ft-lbs)
	Air Chamber to Center Block	27.1 N-m (20 ft-lbs)

SHAFTS	Diaphragm Material	Part Number	Dimensions
	Rubber/TPE	04-3811-03	6.439" L x 0.872" O.D.
	PTFE	04-3842-03	5.848" L x 0.872" O.D.



Pro-Flo V™ Cont'd

PV8 METAL

TORQUE	Description of Part	Torque Value
	Air Valve	13.6 N·m (120 in-lbs)
	Outer Piston, Rubber & TPE fitted, Excluding Stainless Steel Inner Piston	105.7 N·m (78 ft-lbs)
	Outer Piston, PTFE fitted	108.5 N·m (80 ft-lbs)
	Outer Piston, Ultra-Flex™	74.6 N·m (55 ft-lbs)
	Outer Piston, Rubber & TPE fitted Including Stainless Steel Inner Piston	115.2 N·m (85 ft-lbs)
	Small Clamp Band	6.6 N·m (58 in-lbs)
	Large Clamp Band, Rubber & TPE fitted	47.5 N·m (35 ft-lbs)
	Large Clamp Band, PTFE fitted	47.5 N·m (35 ft-lbs)
	Air Chamber to Center Block	27.1 N·m (20 ft-lbs)

SHAFTS	Diaphragm Material	Part Number	Dimensions
	Rubber/TPE	08-3810-09	9.860" L x 0.872" O.D.
	PTFE	08-3840-09	5.875" L x 0.872" O.D.
	Ultra-Flex™	08-3841-03	6.875" L x 0.872" O.D.



Pro-Flo V™ Cont'd

PV800 PLASTIC

TORQUE	Description of Part	Torque Value
	Air Valve	13.6 N-m (120 in-lbs)
	Outer Piston, Rubber, TPE & PTFE fitted	81.3 N-m (60 ft-lbs)
	Outer Piston, Ultra-Flex™ fitted	47.5 N-m (35 ft-lbs)
	Top & Bottom Manifolds	44.7 N-m (33 ft-lbs)
	Liquid Chamber	44.7 N-m (33 ft-lbs)
	Air Chamber to Center Block	27.1 N-m (20 ft-lbs)

SHAFTS	Diaphragm Material	Part Number	Dimensions
	Rubber/TPE	08-3811-09	10.500" L x 0.872" O.D.
	PTFE	08-3842-03	6.750" L x 0.872" O.D.
	Ultra-Flex™	08-3843-03	7.500" L x 0.872" O.D.



PV800 METAL

TORQUE	Description of Part	Torque Value
	Air Valve	13.6 N-m (120 in-lbs)
	Outer Piston, Rubber, TPE & PTFE fitted, w/Stainless Steel Inner Pistons	115.2 N-m (85 ft-lbs)
	Outer Piston, Rubber, TPE & PTFE fitted, Excluding Stainless Steel Inner Pistons	108.5 N-m (80 ft-lbs)
	Outer Piston, Ultra-Flex™ fitted	74.6 N-m (55 ft-lbs)
	Liquid Chamber, Aluminum Only	27.1 N-m (20 ft-lbs)
	Air Chamber to Center Block	27.1 N-m (20 ft-lbs)

SHAFTS	Diaphragm Material	Part Number	Dimensions
	Rubber/TPE	08-3811-09	10.500" L x 0.872" O.D.
	PTFE	08-3842-03	6.750" L x 0.872" O.D.
	Ultra-Flex™	08-3843-03	7.500" L x 0.872" O.D.



Pro-Flo V™ Cont'd

PV15 METAL

TORQUE	Description of Part	Torque Value
	Air Valve	13.6 N·m (120 in-lbs)
	Outer Piston, Rubber, TPE & PTFE fitted	135.6 N·m (100 ft-lbs)
	Outer Piston, Ultra-Flex™ fitted	135.6 N·m (100 ft-lbs)
	Outer Piston Ring	18.9 N·m (14 ft-lbs)
	Small Clamp Band	15.5 N·m (137 in-lbs)
	Large Clamp Band, Rubber & TPE fitted	61.0 N·m (45 ft-lbs)
	Large Clamp Band, PTFE fitted	61.0 N·m (45 ft-lbs)
	Air Chamber to Center Block	27.1 N·m (20 ft-lbs)

SHAFTS	Diaphragm Material	Part Number	Dimensions
	All	15-3805-09	11.625" L x 0.995" O.D.



Pro-Flo V™ Cont'd

PV1500 ALUMINUM

TORQUE	Description of Part	Torque Value
	Air Valve	13.6 N-m (120 in-lbs)
	Inner Piston Ring	18.9 N-m (14 ft-lbs)
	Outer Piston, All Diaphragms	135.6 N-m (100 ft-lbs)
	Air Chamber to Center Block	27.1 N-m (20 ft-lbs)

SHAFTS	Diaphragm Material	Part Number	Dimensions
	All Diaphragms	15-3805-09	11.625" L x 0.995" O.D.



PV1500 STAINLESS STEEL

TORQUE	Description of Part	Torque Value
	Air Valve	13.6 N-m (120 in-lbs)
	Inner Piston Ring	18.9 N-m (14 ft-lbs)
	Outer Piston, All Diaphragms	135.6 N-m (100 ft-lbs)
	Air Chamber to Center Block	27.1 N-m (20 ft-lbs)
	Liquid Chamber to Air Chamber	67.8 N-m (50 ft-lbs)
Top & Bottom Manifolds	54.2 N-m (40 ft-lbs)	

SHAFTS	Diaphragm Material	Part Number	Dimensions
	All Diaphragms	15-3805-09	11.625" L x 0.995" O.D.

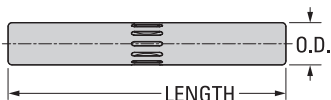


Turbo-Flo™

T1 PLASTIC

TORQUE	Description of Part	Torque Value
	Outer Piston, Rubber, TPE & PTFE w/ Neoprene fitted	10.2 N·m (90 in-lbs)
	Vertical Bolts, Rubber-fitted, Polypropylene	9.0 N·m (80 in-lbs)
	Vertical Bolts, Rubber-fitted, PVDF	5.6 N·m (50 in-lbs)
	Vertical Bolts, PTFE-fitted Polypropylene	9.0 N·m (80 in-lbs)
	Vertical Bolts, PTFE-fitted PVDF & PFA	2.8 N·m (25 in-lbs)
	Small Clamp Bands	1.7 N·m (15 in-lbs)
	Large Clamp Bands, Rubber & TPE fitted	7.3 N·m (65 in-lbs)
	Large Clamp Bands, PTFE fitted	9.6 N·m (85 in-lbs)

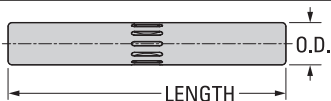
SHAFTS	Diaphragm Material	Part Number	Dimensions
	All	01-3800-03-07	3.350" L x 0.622" O.D.



T1 METAL

TORQUE	Description of Part	Torque Value
	Outer Piston, Rubber, TPE & PTFE w/ Neoprene fitted	14.1 N·m (125 in-lbs)
	Outer Piston, PTFE w/EPDM fitted	20.3 N·m (15 ft-lbs)
	Vertical Bolts	14.1 N·m (125 in-lbs)
	Small Clamp Bands	1.7 N·m (15 in-lbs)
	Large Clamp Bands, Rubber & TPE fitted	9.0 N·m (80 in-lbs)
Large Clamp Bands, PTFE fitted	13.6 N·m (120 in-lbs)	

SHAFTS	Diaphragm Material	Part Number	Dimensions
	All	01-3800-03-07	3.350" L x 0.622" O.D.

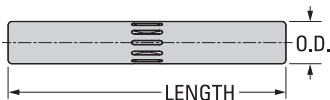


Turbo-Flo™ Cont'd

T2 PLASTIC

TORQUE	Description of Part	Torque Value
	Air Valve	3.4 N-m (30 in-lbs)
	Outer Piston, All Diaphragms	27.1 N-m (20 ft-lbs)
	Top & Bottom Retainers	14.1 N-m (125 in-lbs)

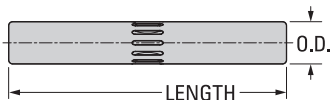
SHAFTS	Diaphragm Material	Part Number	Dimensions
	Rubber/TPE	02-3800-03-07	4.937" L x 0.750" O.D.
	PTFE	02-3820-03-07	4.687" L x 0.750" O.D.



T2 METAL

TORQUE	Description of Part	Torque Value
	Air Valve	3.4 N-m (30 in-lbs)
	Outer Piston, All Diaphragms	40.7 N-m (30 ft-lbs)
	Vertical Bolts	31.2 N-m (23 ft-lbs)

SHAFTS	Diaphragm Material	Part Number	Dimensions
	Rubber/TPE	02-3800-03-07	4.937" L x 0.750" O.D.
	PTFE	02-3820-03-07	4.687" L x 0.750" O.D.



Turbo-Flo™ Cont'd

T4 PLASTIC

	Description of Part	Torque Value
TORQUE	Air Valve	3.4 N·m (30 in-lbs)
	Outer Piston, All Diaphragms	47.5 N·m (35 ft-lbs)
	Small Clamp Band	9.6 N·m (85 in-lbs)
	Large Clamp Band, Rubber & TPE fitted	18.6 N·m (165 in-lbs)
	Large Clamp Band, PTFE fitted	18.6 N·m (165 in-lbs)

	Diaphragm Material	Part Number	Dimensions
SHAFTS	Rubber/TPE	04-3800-03-07	5.875" L x 0.872" O.D.
	PTFE	04-3820-03-07	5.375" L x 0.872" O.D.
	Ultra-Flex™	04-3830-03-07	5.375" L x 0.872" O.D.



T4 METAL

	Description of Part	Torque Value
TORQUE	Air Valve	3.4 N·m (30 in-lbs)
	Outer Piston, Rubber, TPE & PTFE fitted	54.2 N·m (40 ft-lbs)
	Outer Piston, Ultra-Flex™ fitted	47.5 N·m (35 ft-lbs)
	Small Clamp Band	3.4 N·m (30 in-lbs)
	Large Clamp Band, Rubber & TPE fitted	10.7 N·m (95 in-lbs)
	Large Clamp Band, PTFE fitted	13.6 N·m (120 in-lbs)
	Air Chamber to Center Block	8.5 N·m (75 in-lbs)

	Diaphragm Material	Part Number	Dimensions
SHAFTS	Rubber/TPE	04-3800-03-07	5.875" L x 0.872" O.D.
	PTFE	04-3820-03-07	5.375" L x 0.872" O.D.
	Ultra-Flex™	04-3830-03-07	5.375" L x 0.872" O.D.

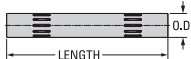


Turbo-Flo™ Cont'd

T8 PLASTIC

TORQUE	Description of Part	Torque Value
	Air Valve	5.1 N-m (45 in-lbs)
	Outer Piston, Rubber & TPE fitted	81.3 N-m (60 ft-lbs)
	Outer Piston, PTFE fitted	81.3 N-m (60 ft-lbs)
	Outer Piston, Ultra-Flex™ fitted	47.5 N-m (35 ft-lbs)
	Small Clamp Band	9.6 N-m (85 in-lbs)
	Large Clamp Band, Rubber & TPE fitted	18.6 N-m (165 in-lbs)
	Large Clamp Band, PTFE fitted	18.6 N-m (165 in-lbs)
Air Chamber to Center Block	27.1 N-m (20 ft-lbs)	

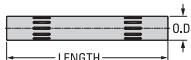
SHAFTS	Diaphragm Material	Part Number	Dimensions
	Rubber/TPE	08-3810-09	9.860" L x 0.872" O.D.
	PTFE	08-3820-03-07	5.875" L x 0.872" O.D.
	Ultra-Flex™	08-3820-03-07	5.875" L x 0.872" O.D.



T8 METAL

TORQUE	Description of Part	Torque Value
	Air Valve	9.6 N-m (85 in-lbs)
	Outer Piston, Rubber & TPE fitted, Excluding Stainless Steel Inner Piston	108.5 N-m (80 ft-lbs)
	Outer Piston, PTFE fitted	108.5 N-m (80 ft-lbs)
	Outer Piston, Ultra-Flex™	74.6 N-m (55 ft-lbs)
	Outer Piston, Rubber & TPE fitted, Including Stainless Steel Inner Piston	115.2 N-m (85 ft-lbs)
	Small Clamp Band	6.6 N-m (58 in-lbs)
	Large Clamp Band, Rubber & TPE fitted	47.5 N-m (35 ft-lbs)
	Large Clamp Band, PTFE fitted	47.5 N-m (35 ft-lbs)
Air Chamber to Center Block	27.1 N-m (20 ft-lbs)	

SHAFTS	Diaphragm Material	Part Number	Dimensions
	Rubber/TPE	08-3810-09	9.860" L x 0.872" O.D.
	PTFE	08-3820-03-07	5.875" L x 0.872" O.D.
	Ultra-Flex™	08-3820-03-07	5.875" L x 0.872" O.D.



Turbo-Flo™ Cont'd

T15 METAL

TORQUE	Description of Part	Torque Value
	Air Valve	9.0 N·m (80 in-lbs)
	Outer Piston, Rubber, TPE & PTFE fitted	135.6 N·m (100 ft-lbs)
	Outer Piston, Ultra-Flex™ fitted	135.6 N·m (100 ft-lbs)
	Outer Piston Ring	18.9 N·m (14 ft-lbs)
	Small Clamp Band	15.5 N·m (137 in-lbs)
	Large Clamp Band, Rubber & TPE fitted	61.0 N·m (45 ft-lbs)
	Large Clamp Band, PTFE fitted	61.0 N·m (45 ft-lbs)
	Air Chamber to Center Block	27.1 N·m (20 ft-lbs)

SHAFTS	Diaphragm Material	Part Number	Dimensions
	All	15-3800-09-07	11.625" L x 0.995" O.D.



Turbo-Flo™ Cont'd

T20 METAL

TORQUE	Description of Part	Torque Value
	Air Valve	9.0 N-m (80 in-lbs)
	Outer Piston, Rubber & TPE fitted	135.6 N-m (100 ft-lbs)
	Outer Piston, PTFE fitted	135.6 N-m (100 ft-lbs)
	Outer Piston, Ultra-Flex™ fitted	135.6 N-m (100 ft-lbs)
	Outer Piston Ring	18.9 N-m (14 ft-lbs)
	Small & Medium Clamp Bands	17.6 N-m (156 in-lbs)
	Large Clamp Band, Rubber & TPE fitted	61.0 N-m (45 ft-lbs)
	Large Clamp Band, PTFE fitted	61.0 N-m (45 ft-lbs)
	Air Chamber to Center Block	27.1 N-m (20 ft-lbs)
	U-Bolt	44.7 N-m (33 ft-lbs)
Drain Plug	105.8 N-m (78 ft-lbs)	

SHAFTS	Diaphragm Material	Part Number	Dimensions
	Rubber, TPE & PTFE	20-3800-09-07	9.875" L x 0.995" O.D.
	Ultra-Flex™	20-3830-09-07	10.375" L x 0.995" O.D.

